



**Virtual Brew:
Mornings with AI**

Unlocking Real-Time Pipeline Insights with the Bullhorn Open API

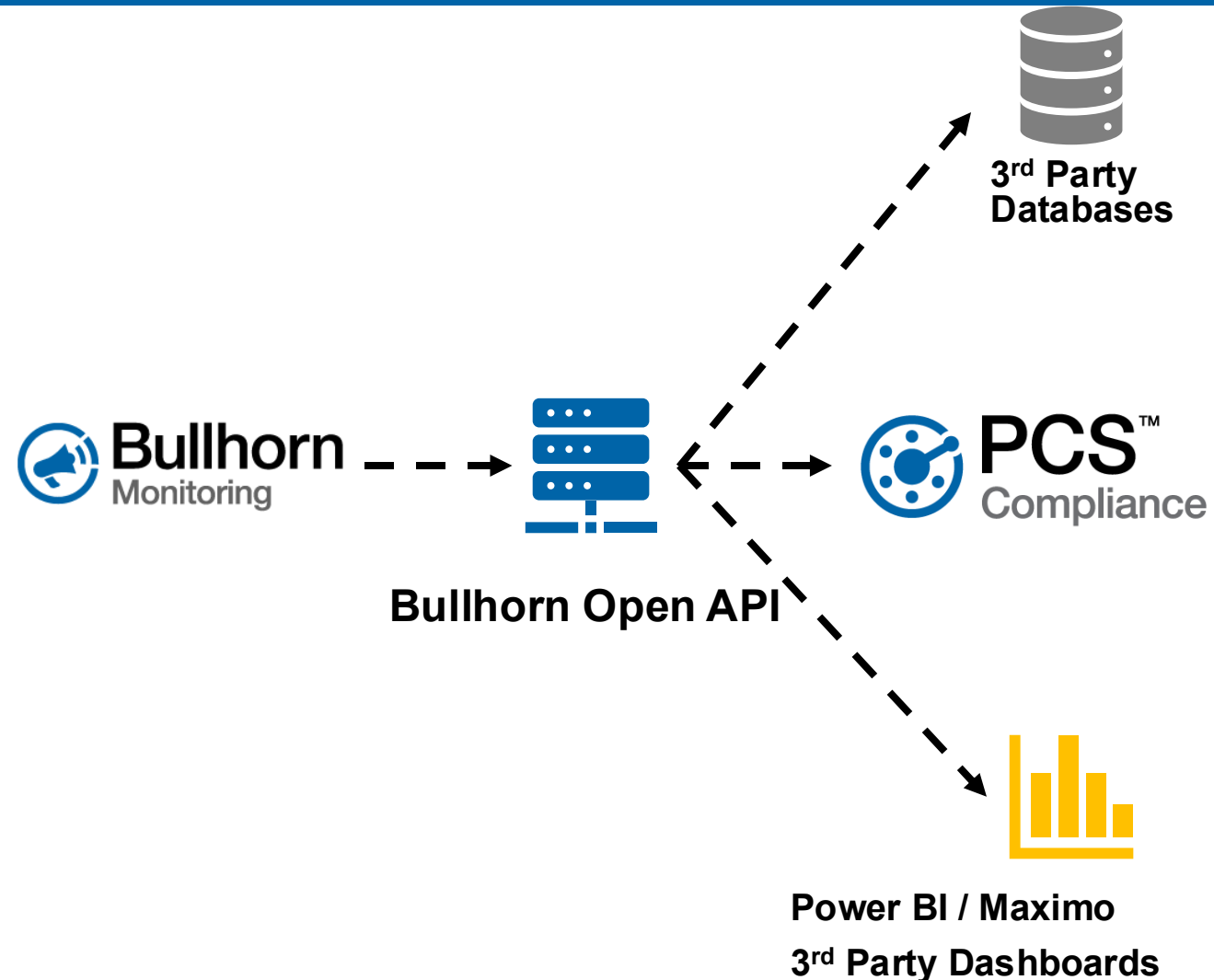
Cole Finney

Product Manager – Bullhorn RMU



Agenda

- Bullhorn Open API Overview
- Bullhorn Open API Capabilities
- Accessing the API
- Bullhorn API Dashboard Demo



API Overview



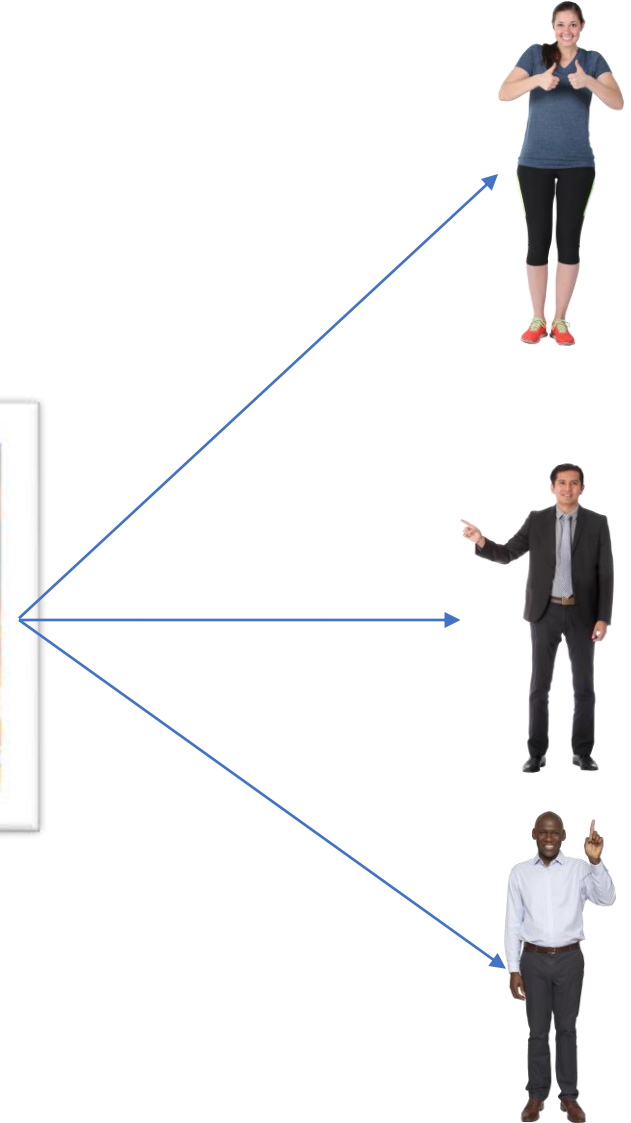
What's an API?

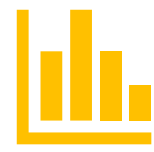
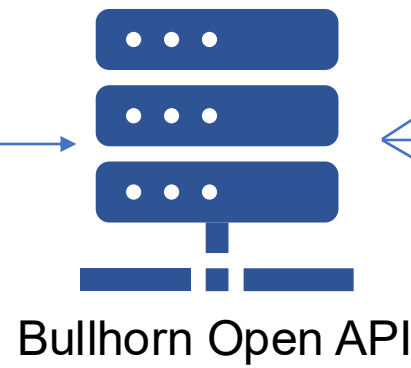
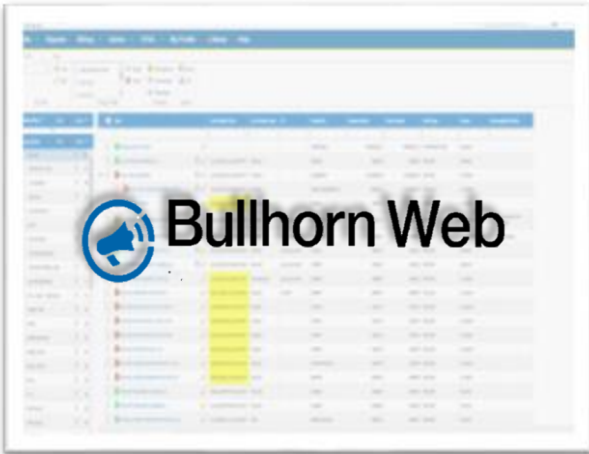


Kitchen



Waitress





**Power BI / Maximo
3rd Party Dashboards**



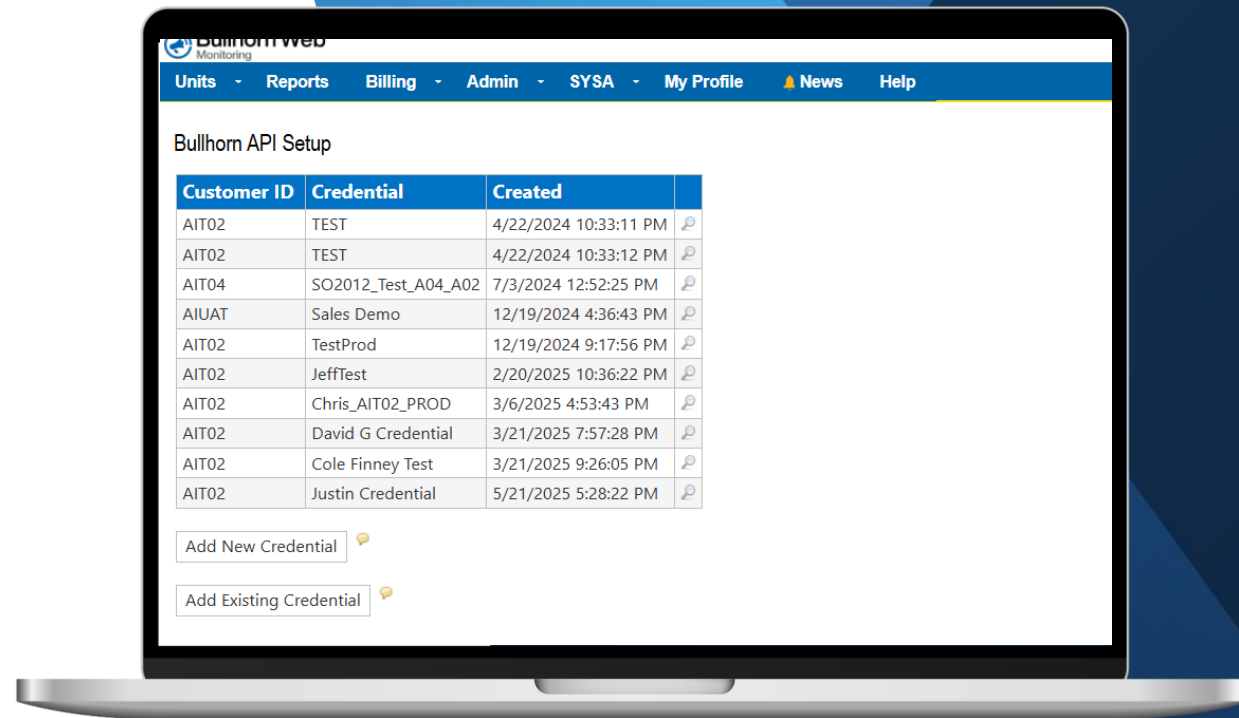
PCS 2.5+



UI Demo App

PCS 2.5 Integration with BHW

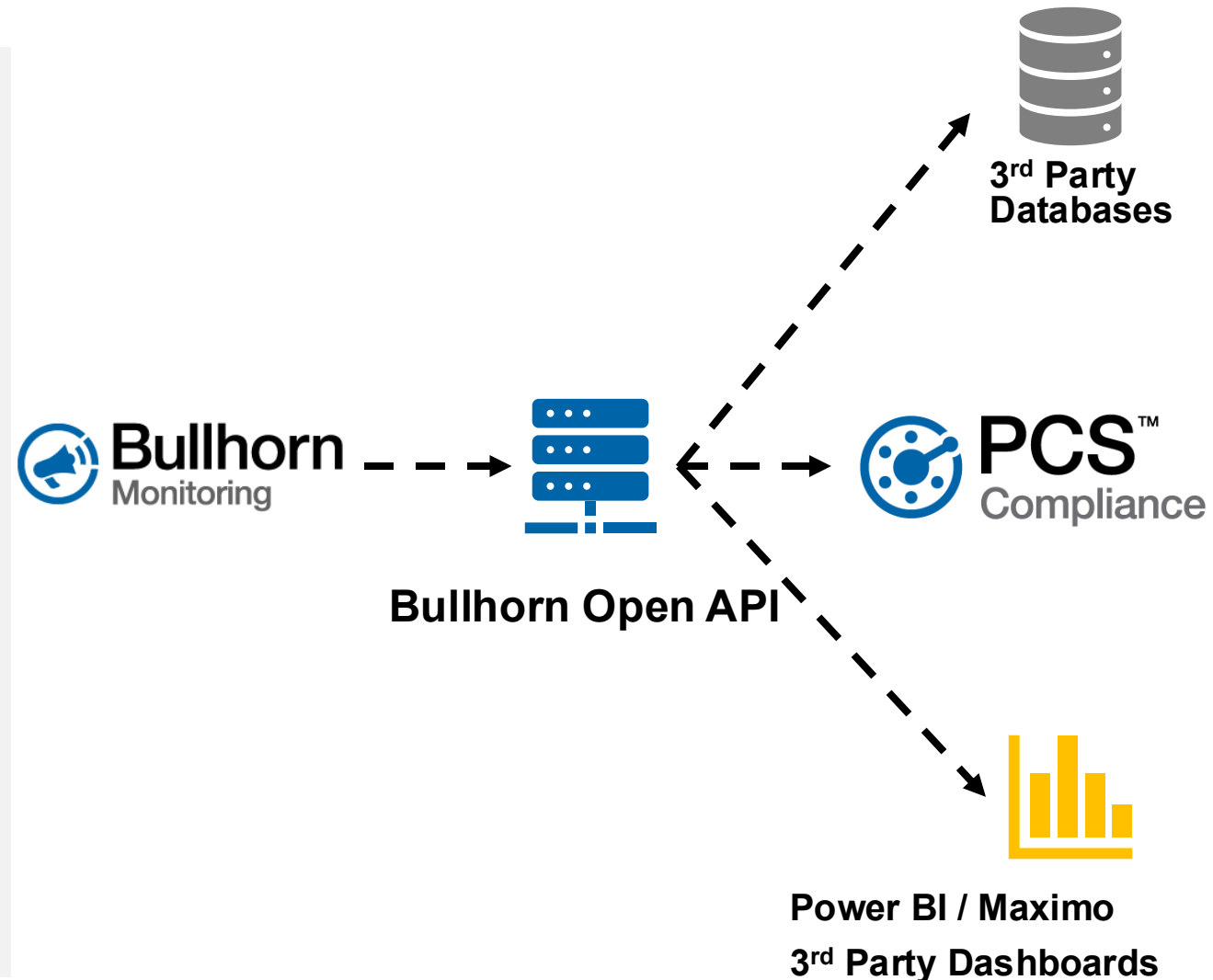
- First API Integration between BHW & PCS 2.5
- One-time setup:
 - One integration per database,
 - Capable of integrating **multiple** BH Client IDs through one API credential
- Fixed bridge errors & silent failures
- Introduced Automapping to increase RMU mapping accuracy



Bullhorn Open API: 3rd Party Integration

Easy 3rd Party System Integration

- Proven API from PCS 2.5 now available for all 3rd party systems
- Access Bullhorn RMU data in any platform at any time



Open API Capabilities



Virtual Brew:
Mornings with AI

Unlocking Real-Time Pipeline Insights with the Bullhorn Web
Open API– December 4th, 2025

 American
Innovations

Bullhorn Open API – *Expanded Integrations*

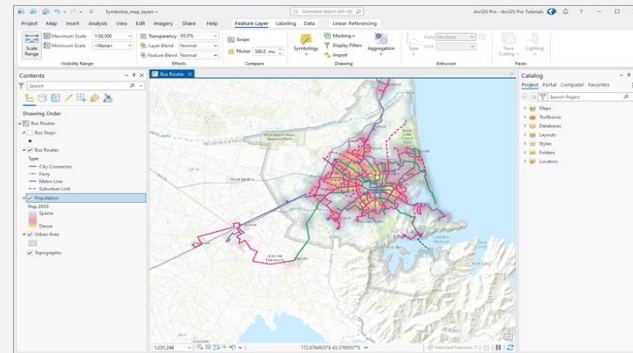
3rd Party Dashboards

- Visualize entire corrosion program in internal dashboards
 - Maintenance Systems (Maximo, SAP, etc.)
 - Power BI



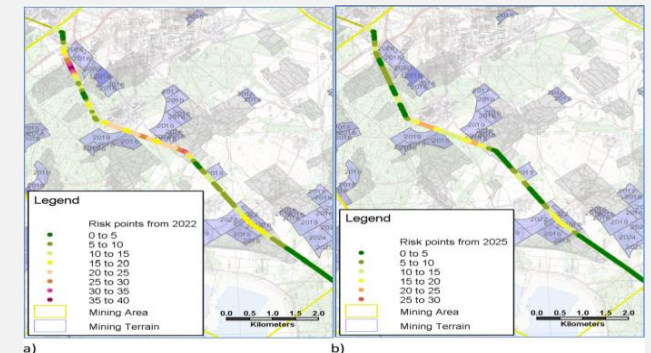
GIS Integration

- Integrate RMUs into infrastructure mapping



Feeding Risk Models

- Add additional insights from RMU
- Drive better decisions



Bullhorn Open API – *Endless Possibilities*

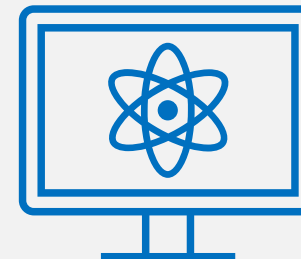
Cross-Platform Integrations

- Connect With Internal & External Systems
 - 3rd party databases
 - Work Order management



Machine Learning

- Learn From Your Data
- Integrate RMU data into Risk, LLM systems



Automated Data Handling



Virtual Brew:
Mornings with AI

Unlocking Real-Time Pipeline Insights with the Bullhorn Web
Open API– December 4th, 2025

 American
Innovations

The Bullhorn Open API Delivers...

**Freedom to Use
Your Data Anywhere**



**Real-Time, Automated
Reporting**



**Configurable Solutions
Tailored to Your Workflow**



Virtual Brew:
Mornings with AI

**Unlocking Real-Time Pipeline Insights with the Bullhorn Web
Open API– December 4th, 2025**

**@ American
Innovations**

Additional Value to Bullhorn RMU Data

Easy One-Way Data Integration

- Utilizes Open API spec
- Pull data from BHW into any system

Secure Data Transfer

- OAuth 2.0 Standard
- Encrypted End-To-End
- Keys are easily removeable

Meaningful Endpoints

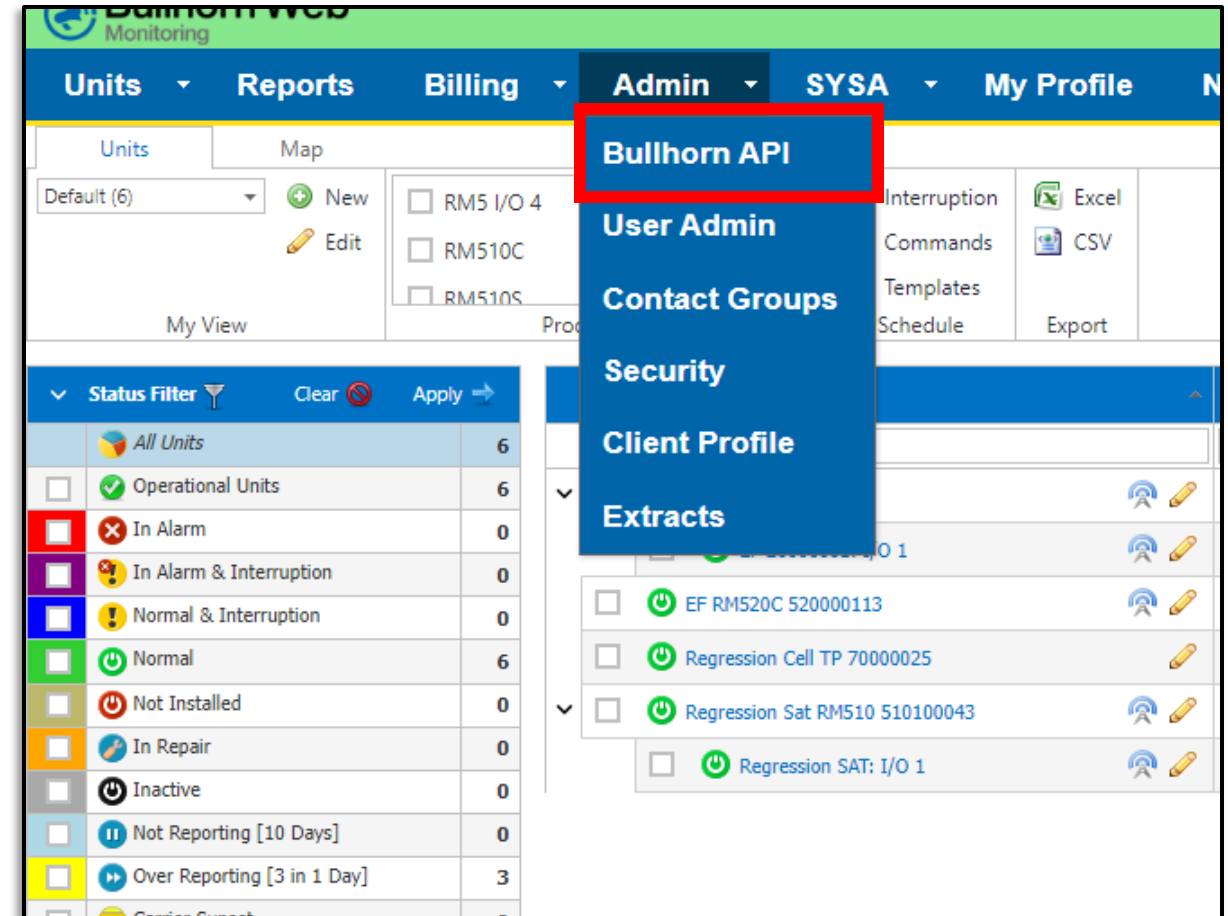
- Link together multiple Clients
- Readings
- Units

Accessing the Open API


Accessing the Bullhorn Open API

Requirements:

- Bullhorn Account
- Client Admin



Bullhorn API Setup

Customer ID	Credential	Created	
AIT07	Dome & IO	5/29/2025 7:47:31 PM	

[Add New Credential](#)[Add Existing Credential](#)

Bullhorn API Demo App

What is the Demo App?

- Visual aid for RMU data
- Using the endpoints available in Bullhorn Open API
- Get familiar with how to use the endpoints!

Technical Details

- Utilized React
- Open API generator using the Open API Spec(Industry Standard)
 - Streamlines the integration of the API
 - <https://github.com/OpenAPITools/open-api-generator>

Dashboard Capabilities Demo

- Demo of example dashboard utilizing the Bullhorn Open API



Documentation

Redoc

Search...

Introduction >

Token >

Tenant >

Unit >

UnitGroup >

UnitDataPoint >

Packet >

Readings >

Bullhorn Open API (v1.0.0)

Download OpenAPI specification: [Download](#)

Introduction

The Bullhorn Open API provides access to tenant, unit, and unit data point information through a structured and standardized interface. It supports various endpoints to retrieve, update, and manage data efficiently.

Swagger

Swagger

Select a definition BullhornOpenApi.Web v1

Bullhorn Open API v1.0.0 OAS3

Authorize

Readings

GET /api/Readings

Facility view of Packet data with dynamic Engineering Label columns

Unit

GET /api/Unit/{Id}

Retrieve a single Unit Record using the Id as an input param

GET /api/Unit

Retrieve List of Units

GET /api/Unit/UnitChangeFeeds

Retrieve lists of Units change data capture