

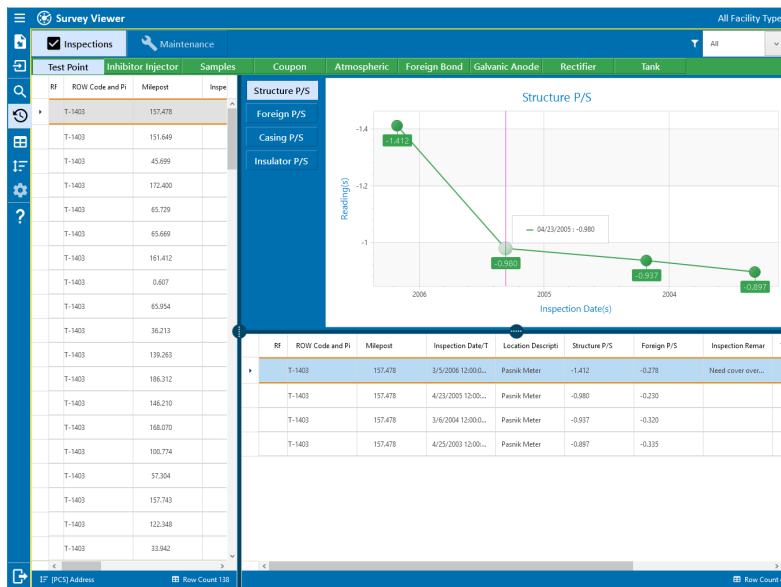
Why Should I Update?

PCS Axis[®] 1.14

Our latest PCS Axis release will give you a better overall user experience, including historical data analysis for Survey Viewer, easy access to In-line Inspection (ILI) data, enhanced Custom Module Manager functionality and more.

Historical Data Analysis for Survey Viewer Now Available

- Historical and current data can be viewed on a graph and grid.
- Historical data can be sent with Allegro .DAT survey files for off-line comparison in the field. This functionality removes need for Pub/Sub creation for off-line diagnostics.
- Go mobile with Survey Viewer's touch-enabled user interface to ensure better usability for Windows[®] tablets.



Use Survey Viewer to see historical and current data on a graph and grid for quick field diagnostics.

In-Line Inspection (ILI) Data Now Available

- ILI survey data can be added to the Internal Survey Manager (ISM) module for comparison with other distance-based surveys.
- ILI survey data can be aligned with Cathodic Protection Data Manager (CPDM) Close Interval Survey (CIS) data, or any other graphable data.

PCS Axis® 1.14

Enhanced Custom Module Manager (CMM) Functionality

- Custom facilities (i.e. pressure vessels, facility maintenance equipment and more) can be created in CMM and added to other facility-based modules like CPDM.

Get Into Data Grids Faster

- Select the data you want to work with before editing in a grid session.

User-Defined Field (UDF) Developments

- Enhanced expression generator for calculated UDFs allows for expression-within-expression embedding.
- Adjust calculations to include years, months, weeks, days and hours.
- New system field “Most Previous Inspection Date” provides additional insight into prior inspections.

Field Computer (FC) Send Updates

- For a selected route, all included facilities will be available in the FC Send menu and will not be limited by hierarchy selection.
- Unique Maintenance Codes are pre-populated when the field has been converted to a pick-list.

Better Bullhorn® Web Integration

- Easily identify mismatched and non-auto-mapped units.
- Scheduling options, notifications, import/export bridge and export-to-table features are now in alignment across Bullhorn Web and PCS systems. Easily read scheduling history and get more details in notification descriptions.
- Customize Bullhorn Web exports by date range, unit group, alarm status and record date within date range.

Enhanced Survey Manager Integration

- Survey data files can be packaged and committed to PCS in zipped format.
- Output files from Survey Manager include images associated with inspection records.

For More Information

To learn more or to upgrade your software, email us at pcstechservices@aiworldwide.com or call **800-229-3404**.