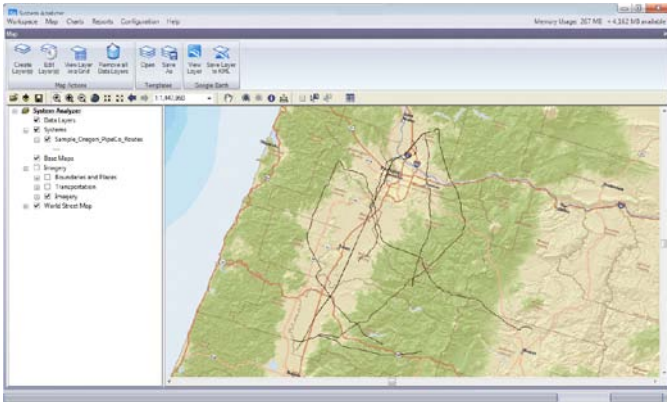


INTRODUCTION

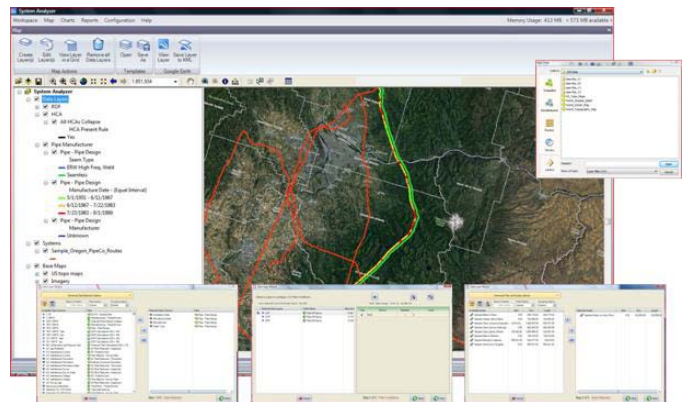
System Analyzer is an analysis and visualization tool designed to leverage data within one or more RIPL databases for analysis and decision support in order to facilitate and improve system integrity decision-making. In addition, it will also assist Operations Personnel and Management who participate in or affect the integrity process. While RIPL’s existing application provides, and will continue to focus on, the construction and execution of risk (and post-risk) data and evaluation models, System Analyzer will integrate those modeling results and any other data loaded in RIPL to provide additional meaning and context to users via compelling visual displays.

WITH SYSTEM ANALYZER’S MAP-CENTRIC INTERFACE, USERS CAN QUICKLY:

- Analyze and view data with an easy-to-use map-centric interface
- Create and edit custom map layers
- Query and filter data using a wizard-driven interface
- Save and retrieve user created templates
- Connect to multiple RIPL databases – view current risk with historic risk data, PCS data, or any other source or derived data
- Add imagery and other base map datasets
- Add GIS in multiple formats – shapefiles, geodatabases, rasters, ESRI layer files and GIS Servers
- Export map layers data to KML for viewing Google Earth™



System Analyzer Interface



Create and filter map layers with wizard-drive interface

PRODUCT SUPPORT & TRAINING

If you have a suggestion, question, feature request, or a bug to report—your feedback would be appreciated. Also if you have a training need for your organization or would like to know more about upcoming System Analyzer training classes, please use any of the following contact information to reach CTD Technical Support:

- Support E-mail: ctdtechservices@aiworldwide.com
- Support Telephone: 303-948-0119 ext 451
- American Innovations <http://www.aiworldwide.com/>