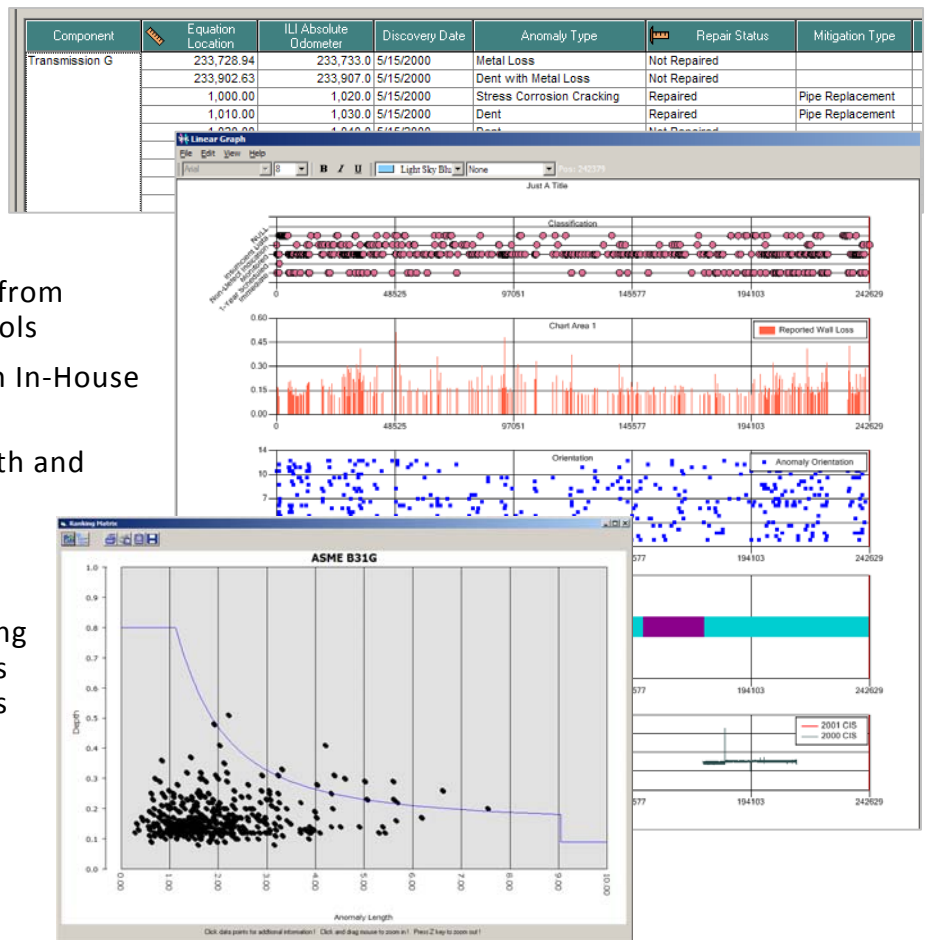


Anomaly Management | Fact Sheet

More than ever, pipeline operators around the world are relying on In-Line Inspection tools to confirm the integrity of their pipelines. More smart pigs are run today than ever before creating a tidal wave of critical data that must be effectively managed. So critical is this function to integrity and risk management programs, companies have dedicated engineering teams to specialize in and analyze the results of ILI surveys. These engineering specialists require flexible, reliable enterprise class software such as American Innovations Risk Intelligence™ Platform (RIPL) to do their job.

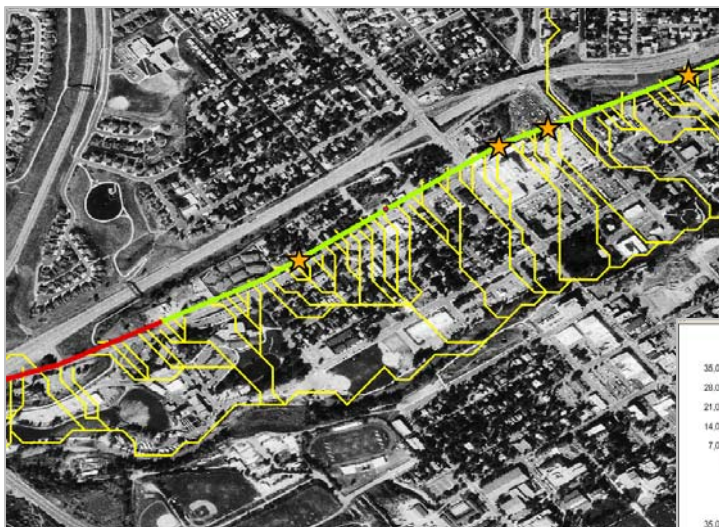
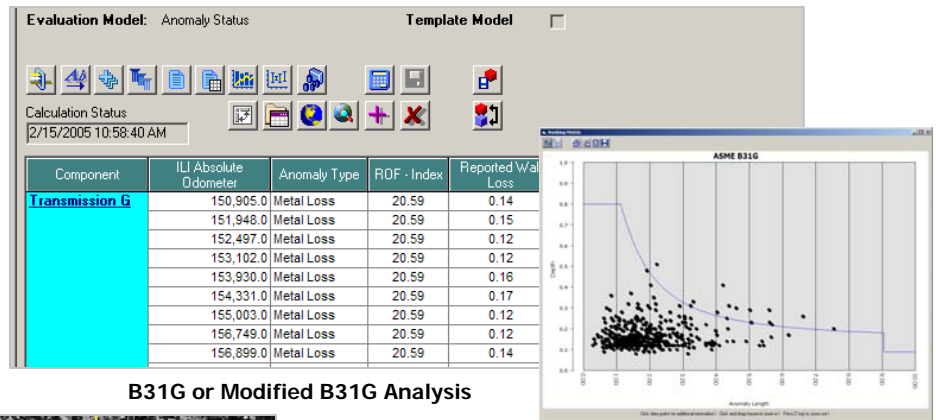
- 1 Store all ILI Survey result in a central repository
- 2 Align ILI data to pipeline centerline and stationing
- 3 Compare ILI data with other critical integrity data such as CI and CP data
- 4 Normalize results and data from different vendors and/or tools
- 5 Classify Anomalies Based on In-House or Regulatory Criteria
- 6 Calculate Remaining Strength and Safe Operating Pressures
- 7 Identify and Prioritize Anomaly Dig Sites
- 8 Calculate short term and long term corrosion growth rates based on industry standards
- 9 Establish Re-Inspection Intervals Based on Anomaly Growth Rates
- 10 Track and Manage In-Line Inspection Data Through Time
- 11 Visualize Multiple Anomaly Features with Reporting, Linear Graphing and GIS Tools



Anomaly Management | Fact Sheet

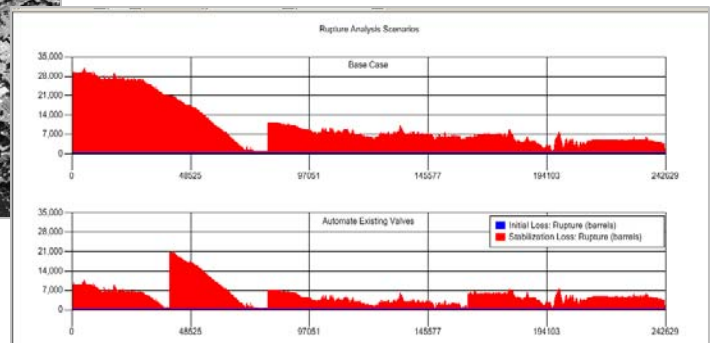
Risk Analysis

Threat screening analysis and quantitative/qualitative risk ranking methods prioritize monitoring and inspection activity. B31G, Modified B31G and other engineering calculations are performed on anomalies to determine effect on pipeline integrity.



Geo-Spatial Analysis

Integrate pipeline centerline, HCA, imagery, risk and root cause or consequence data utilizing the RIPL GIS feature. Calculate release flow-lines using RiskCAT™ liquid consequence modeling tool and analyze through RIPL.



Benefits

- Regulatory Compliance Through Industry ILI Anomaly Management Best Practices
- Change Management from ILI Anomaly Discovery to Evaluation, Inspection and Repair or Removal
- Technical Justification of Monitor versus Scheduling by Integrating all Data and Analysis Results
- Optimized Re-Inspection and Dig Budgets with Anomaly Growth and Re-Assessment Interval Analysis
- Central Repository to manage **ALL** Survey data from multiple vendors over time

Contact Us

For additional information contact us at:
 American Innovations
 7810 Shaffer Parkway, Suite 150
 Littleton, Colorado 80127
 1.866.987.4466 | www.amerinnovations.com/imd.html

Active Partnerships & Memberships



Risk Intelligence ▶ Expanding Risk Insight to Fit Your Business