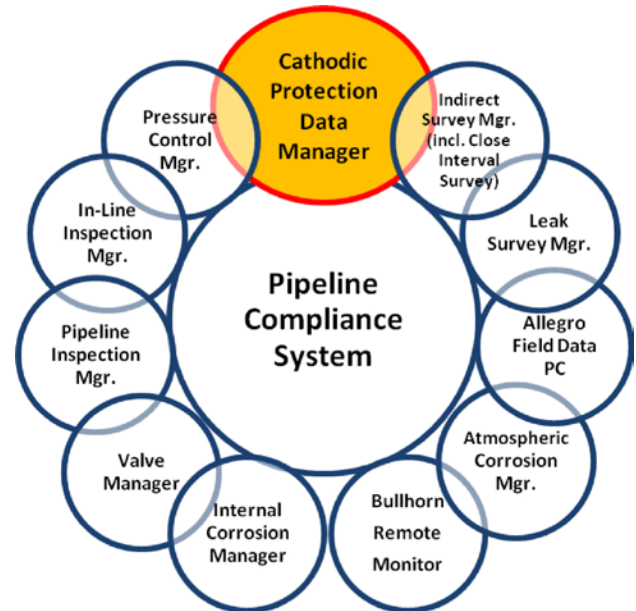


The **Cathodic Protection Data Manager (CPDM)** is the industry standard for managing cathodic protection data. CPDM is the flagship module within American Innovations' powerful Pipeline Compliance System (PCS), an integrated application for managing and analyzing maintenance, compliance and operational data for natural gas, hazardous liquids and other regulated pipeline systems. Whether scheduling routine field data collection, judging system effectiveness, pinpointing problems, prioritizing ground bed construction, or preparing for a regulatory audit, **CPDM is an indispensable tool for cathodic protection professionals.**

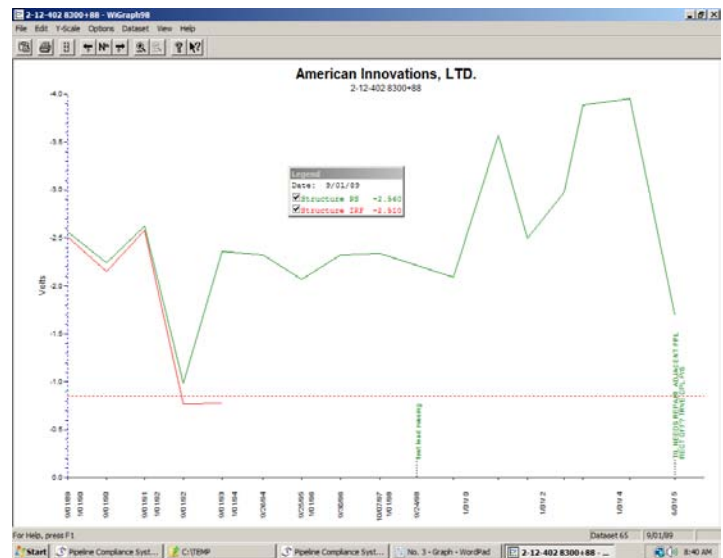
CPDM combines the cathodic protection method of corrosion control with scalable database management to *deliver, order, and control the huge quantities of data* produced in cathodic protection systems. At the same time, CPDM lowers the clerical and administrative overhead of operating a CP system, freeing professional staff for engineering functions and data interpretation.



## CPDM - Key Benefits

*The Cathodic Protection Data Manager module helps you focus in on what is important to your pipeline.*

- Flexible **Ad-Hoc reporting** saves time and provides unlimited capability for searching, sorting and analyzing data
- Easy visualization of problem areas using **Graphical report** options with year-over-year comparisons
- Efficiently utilize resources with date-based **schedules** or order-based **routes** for your survey teams
- Manage **compliance data** on a multitude of asset types and related maintenance information



**For more information, contact:**

**Steve Hamblin, Director of Sales**  
[steve.h@aiworldwide.com](mailto:steve.h@aiworldwide.com) ph: (303) 885-6818

**Christopher Shawhan, Regional Sales Manager**  
[christopher.s@aiworldwide.com](mailto:christopher.s@aiworldwide.com) ph: (512) 249-3404

CPDM is the product of a team of experienced cathodic protection engineers and computer professionals, and has been thoroughly tested on both small and large CP systems. In continuous development since 1985, CPDM is the industry leader in cathodic protection data management.

### Manage Large Data Quantities Easily

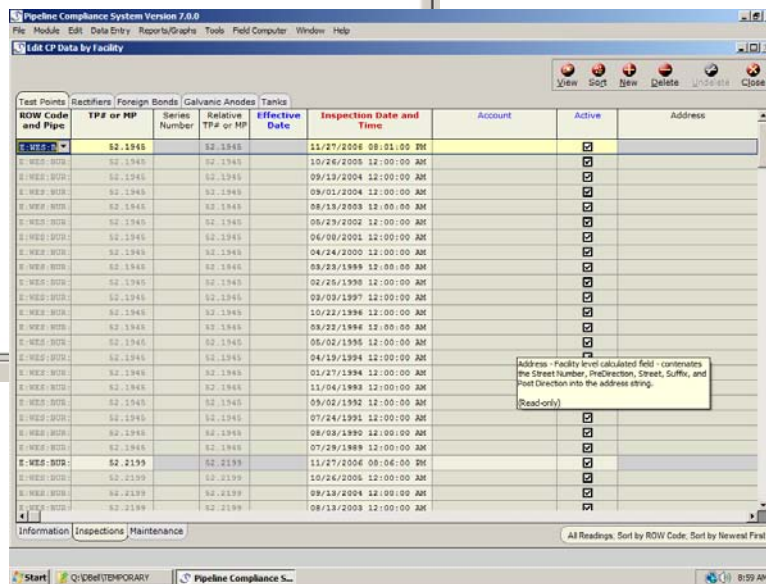
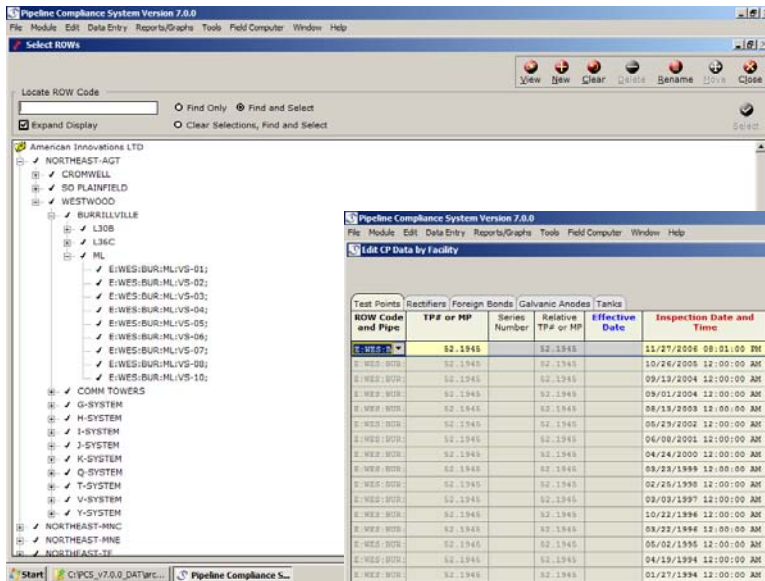
- Manages test station, rectifier, galvanic anode, foreign bond, isolated services and tank CP performance, compliance, and repair data as well as hundreds of other related data fields across the pipeline.

### Flexible Data Entry

- Users select which fields will be included in the grid from available field names
- User determines appearance of data tables
- Data entered manually or downloaded from dataloggers

### Flexible Open Hierarchy File System

- User configured hierarchical tree organizes pipeline system and provides editing capabilities to reconfigure system for adding and deleting segments or facilities.



### Multi-User Design

- Provides replication/synchronization method to share data throughout the organization.

### Survey Scheduling

- Features user-definable scheduling “rules”
- Build custom surveying routes for efficient data collection for all types of facilities

### Graphing

- Graphics package is designed specifically for fast generation of complete line graphs or individual test point, rectifier and bond graphs
- Continuous strip chart type of graph for analyzing long transmission lines