



# Allegro Field Data PC™

The **Allegro MX Field Data PC** is a versatile field computer created specifically to meet the demands of the oil and gas pipeline industry. Utilized by industry leaders to capture critical pipeline and facility data, the Allegro increases productivity and improves accuracy by saving data collection and transcription time, verifying test locations and eliminating errors associated with manual entry.

### ✓ Survey Types

- Periodic / Annual Surveys
- Close Interval Potential Surveys
- DCVG (Direct Current Voltage Gradient)



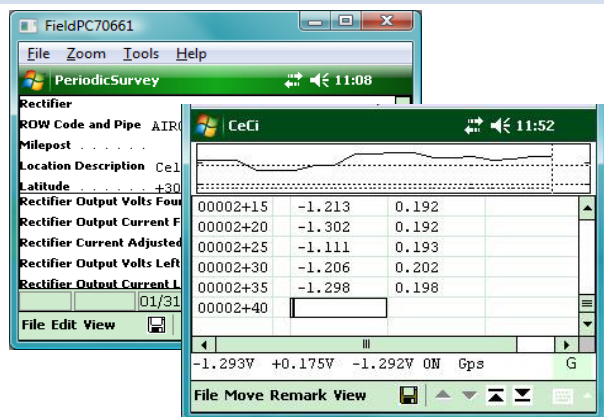
| Features  | Benefits  |
|---|---|
| Transreflective screen for easy to read display outdoor or indoors                  | Ideal for rugged field environments   |
| Integrated digital voltmeter  | Fast, accurate CP survey measurements   |
| 100% compatible with Pipeline Compliance System (PCS™) software                     | Range checking and validation lists to ensure validity of data  |
| Internal GPS for interrupted surveys & optional external GPS for sub-meter accuracy | Records coordinates and time stamp for verification   |
| Accurately loads and verifies test locations with RFID (Radio Frequency ID) reader. | Simplifies routing and verifies test locations; 100% verification inspections were performed & generates automatic inspection history log |
| Windows Mobile 6.1 OS; 624 MHz PXA270 processor                                     | Includes Microsoft Office®, Outlook® and Explorer® suite  |

### Close Interval & DCVG Survey Software

- Graphical display of collected data including waveforms
- Upload data to PCS or export to CSV file for external applications
- Trimble-integrated GPS for interrupted measurements and surveys

### Periodic Survey Software

- Collect data on multiple facility types
- Upload/download routes from PCS
- Display previously collected data & site list of inspection points; sort by GPS function



| <b>Allegro MX Field Data PC Product Specifications</b> |  |
|--|--|
| <b>Processor</b>                                       | 624 MHz PXA270 processor   |
| <b>Operating System and Software</b>                   | Windows Mobile® 6 Classic, Microsoft® Office Mobile, Multiple Languages  |
| <b>Display Options</b>                                 | <ul style="list-style-type: none"> <li>• Color Display: 3.8" (96mm) QVGA (320 X 240) daylight readable transreflective color LCD</li> <li>• Monochrome Display: 4.1" (104mm) QVGA (320 X 240) high visibility monochrome LCD</li> </ul> Display heater for cold extremes             |
| <b>Keyboard</b>  | 62-key full alpha & numeric keyboard, large keys color coordinated by function, dual purpose Windows Mobile® or application function keys, removable keyboard bezel for easy cleaning  |
| <b>Ports</b>   | Full size USB host - A , Mini USB client – B, Com I, RS-232C 9-pin subD with 5VDC on DTR pin, 12VDC power in, 10-18V unregulated   |
| <b>Physical</b>  | Size 10" high X 5.25" wide at display X 1.5" deep 3.1" wide at narrowest point (256mm X 133mm X 79mm), Wt. 1.8 lbs (840g)  |
| <b>Environmental</b>                                   | IP 67 waterproof and dustproof, Operating temp: -22F to 130F (-30 to 54C), Storage temp: – 30F to 140F (-35 to 60C), tested to MIL-STD 810F for water, humidity, sand and dust, vibration, attitude, shock and temperature   |
| <b>Power</b>   | <ul style="list-style-type: none"> <li>• Rechargeable 4000mAh NiMH battery</li> <li>• Run time is approx. 8 hours (depending on use)</li> <li>• Fully charged in four hours</li> <li>• Real Time Clock keeps correct date and time, even during long term battery removal</li> </ul> |
| <b>Wireless Connectivity Options</b>                   | Bluetooth® wireless technology 2.0+EDR, Class I, range 30 feet (10 meters), 802.11 b/g US and International Wi-Fi options  |
| <b>Standard Accessories</b>                            | 4000 mAh NiMH battery, Styli-pen and mini, 100-240 V AC power supply US plug, documentation CDs, USB synch cable, hand strap and shoulder strap  |
| <b>Optional Accessories</b>                            | USB/Power Dock, 12 VDC vehicle charger, International charger kit includes US, EU, Australia, & UK plugs, Expansion pods for GPS, bar code scanner, National Instruments DAQ, radio modem and OEM development.   |

**Services.** American Innovations Allegro Technical Service Engineers provide:

- Technical support via phone and email
- Customer training (on-site and in the AI Austin, TX facility)
- Survey file transfer to Pipeline Compliance System (PCS™) software

**About American Innovations.** American Innovations (AI) provides oil and gas companies with critical knowledge and decision support for assets and infrastructure via corrosion protection and integrity management services. The company supplies products and services to automate the collection, storage, and reporting of equipment and pipeline compliance data. Bass Engineering, a subsidiary of American Innovations, offers Cathodic Protection engineering services. American Innovations product lines include: Pipeline Compliance System (PCS™), Allegro Field Data PC™, Bullhorn® Remote Monitoring, MicroMax® Current Interrupters, and Integrity Management via Risk Intelligence™ Software and Compliance & Engineering Services.

**For more information:**

**Barb Harwell, Inside Sales Associate / [barb.harwell@aiworldwide.com](mailto:barb.harwell@aiworldwide.com) ph: (303) 948-0119 x504**

**American Innovations | Compliance Technology Division | 8201 Southpark Ln., Ste 100 | Littleton, CO | 80120**