

American Innovations' (AI) **Allegro MX Field Data PC** is an expandable and versatile field computer that was **created specifically to meet the demands of the oil and gas pipeline industry**. Utilized by pipeline industry leaders to capture required, critical pipeline and facility data, Allegro units typically pay for themselves in less than a year by saving data collection and transcription time and eliminating errors associated with manual data entry.

Allegro MX Benefits

Allegro MX Field Data PC is a must for companies in the oil and gas pipeline industry.

- 100% compatible with AI-Pipeline Compliance System (PCS) Software
- Ideal for Periodic, Close Interval and DCVG Surveys
- Integrated full functional volt meter
- GPS data collection and GIS data verification
- Intuitive and easy-to-use for all levels of corrosion expertise
- Range checking and validation lists to ensure accuracy of data
- Works with standard and GPS synchronized current interrupters



The **Allegro MX** is the newest generation of field data PC and features a faster than ever processor operating on the latest Windows Mobile® 6.1 operating system (including Microsoft Office®, Outlook® and Explorer® suite). Color and B&W display options available. It is compatible with any external GPS, standard WAAS or sub-meter that outputs a NEMA format. Compatible with most GIS mapping and graphical display software for Waypoint creation, definition and navigation. Periodic, CI, and DCVG modules work with standard and GPS synchronized current interrupters.

For more information:

Steve Hamblin, Director of Sales / steve.h@aiworldwide.com ph: (303) 885-6818

Christopher Shawhan, Regional Sales Manager christopher.s@aiworldwide.com ph: (512) 249-3404

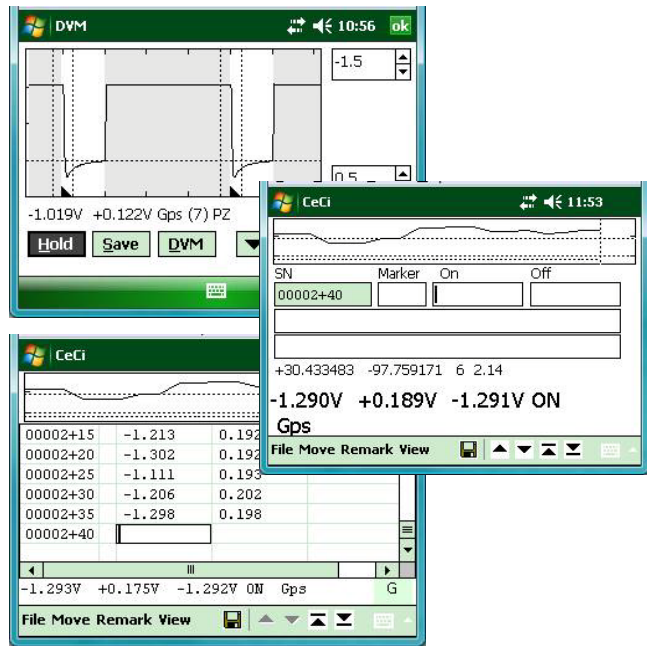
American Innovations/ 12211 Technology Blvd. / Austin, TX / 78727 / 800-229-3404

Periodic Survey Software:

- Collect Data on Multiple Facility Types
- Display previously collected data
- Display site list of inspection points with sort by GPS location function
- Upload or download custom & standard routes from PCS Software

Close Interval and DCVG Survey Software:

- Fast or slow cycle surveys
- Delay settings eliminates data capture during on/off transitions
- Graphical display of collected data: on, on/off, native survey (Can display waveforms)
- Upload to PCS or export to CSV file for import into external applications
- GPS Time Synchronization Software for precise time-controlled signal sync



ALLEGRO PRODUCT SPECIFICATIONS

Processor: 624 MHz PXA270 processor

Operating System and Software: Windows Mobile® 6 Classic, Microsoft® Office Mobile, Multiple Languages

Memory/Data Storage: 128 MB RAM, 1GB or 2GB internal storage options, PCMCIA slot (Type I or Type II 16-bit), Micro SD/SDHC slot

Display Options:

Color Display: 3.8" (96mm) QVGA (320 X 240) daylight readable transreflective color LCD

Monochrome Display: 4.1" (104mm) QVGA (320 X 240) high visibility monochrome LCD

Display heater for cold extremes

Keyboard: 62-key full alpha & numeric keyboard, large keys color coordinated by function, dual purpose Windows Mobile® or application function keys, removable keyboard bezel for easy cleaning

Ports: Full size USB host - A, Mini USB client – B, Com I, RS-232C 9-pin subD with 5VDC on DTR pin, 12VDC power in, 10-18V unregulated

Physical: Size 10" high X 5.25" wide at display X 1.5" deep 3.1" wide at narrowest point (256mm X 133mm X 79mm), Wt. 1.8 lbs (840g)

Environmental: IP 67 waterproof and dustproof, Operating temp: -22F to 130F (-30 to 54C), Storage temp: – 30F to 140F (-35 to 60C), tested to MIL-STD 810F for water, humidity, sand and dust, vibration, attitude, shock and temperature

Power

Rechargeable 4000mAh NiMH battery

Run time is 10 to 20 hours depending on use

Fully charged in four hours

Real Time Clock keeps correct date and time, even during long term battery removal

Wireless Connectivity Options: Bluetooth® wireless technology 2.0+EDR, Class I, range 30 feet (10 meters), 802.11 b/g US and International Wi-Fi options

Certifications: FCC Class B, CE Mark, EN60950, RoHS compliant

Standard Accessories: 4000 mAh NiMH battery, Styli-pen and mini, 100-240 V AC power supply US plug, documentation CDs, USB synch cable, hand strap and shoulder strap

Optional Accessories: USB/Power Dock, 12 VDC vehicle charger, International charger kit includes US, EU, Australia, & UK plugs, Expansion pods for GPS, bar code scanner, National Instruments DAQ, radio modem and OEM development.