

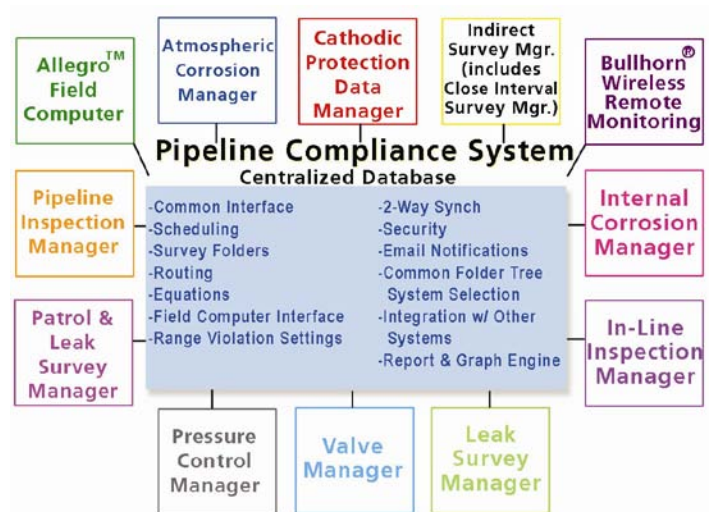
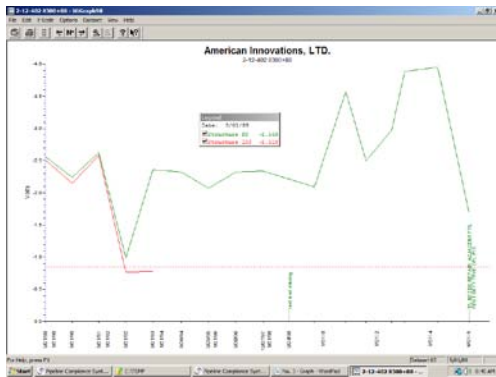
All New Version 7

PRODUCT DATA SHEET



Pipeline Compliance System Software

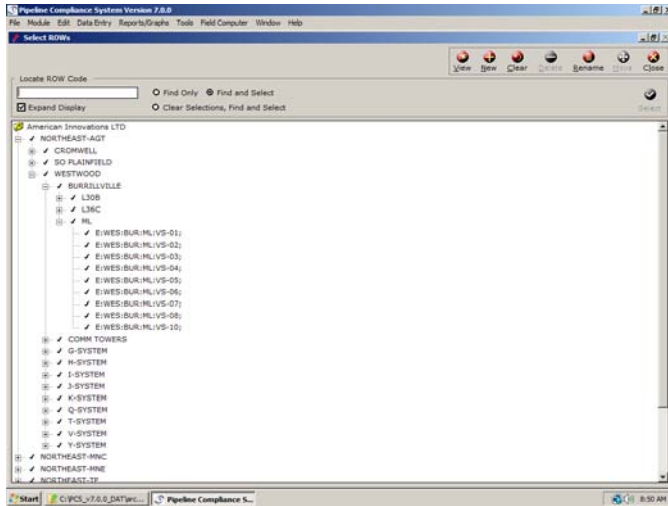
Pipeline Compliance System (PCS), is a completely scalable integrated application for capturing, managing and analyzing inspection, maintenance, compliance and operational data for natural gas, hazardous liquids and other underground pipeline systems. PCS is used to plan work activities, ensure regulatory compliance, and as a method for integrating and correlating data to improve resource allocation and risk reduction decisions.



In continuous development since 1985, PCS is the industry leader in database

management for required and recommended inspection of pipeline assets. Unique to PCS is the ability to do business the way you do your business and not have to conform to external software rules. Easily manage and control the huge quantities of data required to meet the stringent compliance requirements for periodic inspection of various pipeline assets including CP, atmospheric, internal corrosion inspections, pressure control & more, and easily generate system or user-defined reports to allow detailed and summary analysis of current conditions, required follow up, and needed maintenance.

At the same time, PCS monitors inspection intervals, optimizes geographic routing, combines routes and helps balance the workload to significantly reduce the clerical and administrative overhead required. Whether scheduling routine field data collection, judging system effectiveness, pinpointing problems, or preparing for a regulatory audit, PCS is an indispensable tool. PCS is the product of a team of experienced pipeline engineers and computer professionals, and is being used by more pipeline companies in the US than any other commercially available software product.



Flexible Open Hierarchy File System

- User configured hierarchical tree organizes pipeline system and provides editing capabilities to reconfigure system for adding and deleting segments or facilities.

Data Integration with External Applications

- Automated data exchange between PCS, GIS, Risk Assessment, Work Management and other external applications via the Bi-Directional Bridge software Module

Data Validation, Range and Criteria Checking

- User defined rules and criteria eliminate or verify out of compliance data prior to completing the data entry process

Built In Security

- User access for viewing, editing, changing, deleting, and other user rights built into software.

Flexible Ad-Hoc Reporting

- Provides unlimited capability for sorting, filtering, and analyzing data.

Multi-User Design

- Provides replication/synchronization method to share data throughout the organization.

Survey Scheduling

- Features user-definable scheduling "rules"
- Build custom surveying routes for efficient data collection for all types of facilities

Graphing

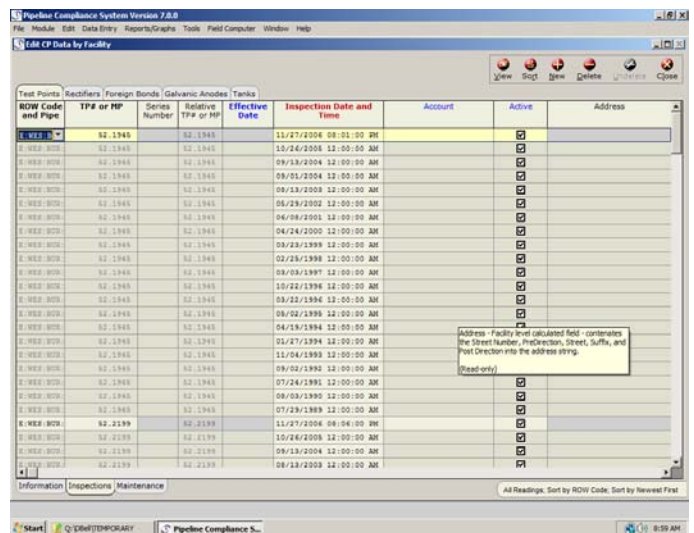
- Easy visualization of problem areas over time!
- Graphics package is designed specifically for fast generation of complete line graphs or individual test point, rectifier and bond graphs
- Continuous strip chart type of graph for analyzing long transmission lines

Manage Large Data Quantities Easily

- Manage all CP, Atmospheric, Internal, Valve, Leak Survey, exposed pipe reports and other required inspections. Our distributed database design allows the data to be accessed locally, while detached from your network and synchronize with the master database when reconnected to the network.

Flexible Data Entry

- Users select which fields will be included in the grid from available field names. Unlimited user defined fields allow you to do business your way.
- User determines appearance of data tables
- Data entered manually, bridged in from external data sources or downloaded from the Allegro Field PC.



For More Information, Contact:
American Innovations
Steve Hamblin – 303-885-6818 or
Christopher Shawhan – 512-249-3404
steve.h@aiworldwide.com
christopher.s@aiworldwide.com